

News Release



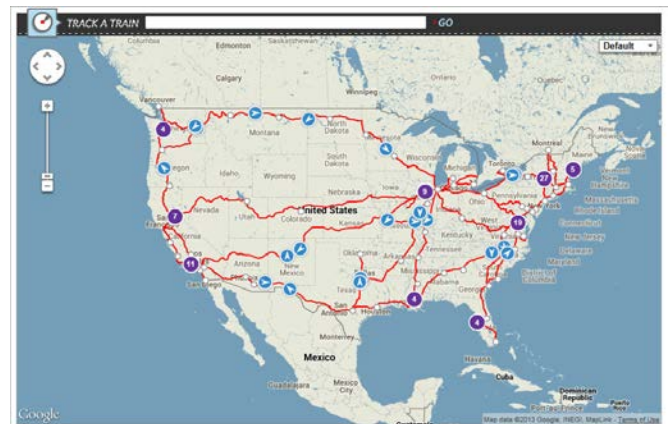
FOR IMMEDIATE RELEASE
Sept. 30, 2013

ATK-13-111
Contact: Media Relations
202 906.3860

AMTRAK TEAMS WITH GOOGLE TO CREATE INTERACTIVE TRAIN LOCATOR MAP New map provides visual of train status and arrival times, improves customer travel experience

WASHINGTON – Amtrak is introducing an innovative way to see where trains are and when they are expected to arrive, including information on stations nation-wide, all through a new interactive train locator map built on the easy-to-use, familiar Google Maps interface.

The new train location tracking system, available at Amtrak.com, provides near real-time train status of more than 300 daily trains, estimates of arrival times and station information – all in the context of the Amtrak national system map. Checking on train status is the second most popular action on Amtrak.com, just after purchasing tickets.



In addition to helping passengers plan travel, this new travel resource is an excellent tool for those planning the arrival or departure of family and friends. Users can search for information by train number or name, city name and station name or code.

“This tool creates a new platform for sharing information with our customers, and Amtrak will continue to add helpful layers onto this map such as local travel and tourist information to provide passengers a one-stop location for all their travel needs,” said Amtrak Chief Marketing and Sales Officer Matt Hardison. “This map joins several recent technology-related offerings that have improved the customer experience and changed how Amtrak does business, ultimately changing and enhancing the way customers travel with us.”

-more-

The information provided in the map is aggregated data collected from GPS units on each operating train and other automated systems. The data is transmitted to Google's cloud, and then transferred to the map.

The new tracking system joins several recent technology advancements at Amtrak including expanded and improved Wi-Fi, eTicketing and mobile phone apps.

In addition to working with Google to advance new systems for our customers, Amtrak has partnered with other major industry-leading brands, such as Apple and AT&T, to improve the amenities and services provided to passengers.

To learn more about the new map visit blog.amtrak.com.

About Amtrak®

Amtrak is America's Railroad®, the nation's intercity passenger rail service and its high-speed rail operator. A record 31.2 million passengers traveled on Amtrak in FY 2012 on more than 300 daily trains – at speeds up to 150 mph (241 kph) – that connect 46 states, the District of Columbia and three Canadian Provinces. Amtrak operates intercity trains in partnership with 15 states and contracts with 13 commuter rail agencies to provide a variety of services. Enjoy the journey® at Amtrak.com or call 800-USA-RAIL for schedules, fares and more information. Join us on facebook.com/Amtrak and follow us at twitter.com/Amtrak.

###